

AXENT MILTON

**INSTALLATION** INSTRUCTION





These mounting instructions come as part of the AXENT shower toilet and should be read carefully prior to installation.

### Explanation of the key words and symbols



#### **DANGER!**

High risk, lethal hazards, severe injuries



#### **CAUTION!**

Low risk, minor injuries



#### **NOTE!**

Damage to property

### Target Readership and Qualifications

The shower toilet and associated water connection may only be installed by qualified plumbers. The electrical installation may only be carried out by qualified electricians.



#### **NOTE!**

- Local installation regulations, country-specific standards and the low voltage directives must be observed at all times.
- DO NOT install the shower toilet in rooms where there is a danger of frost. The room temperature must not be less than 39 °F ( 4°C ).
- Condensation may form when the shower toilet unit is brought from a cold location to a warm one. Leave the unit switched off for a few hours.



#### **DANGER!**

##### **Risk of fatal electric shock.**

- The appliance has to be earthed.
- Do NOT remove individual shower toilet components.
- If it has a damaged cord or plug, return the product to a service center for repair. The cord or plug must only be changed by a person with the necessary expertise.



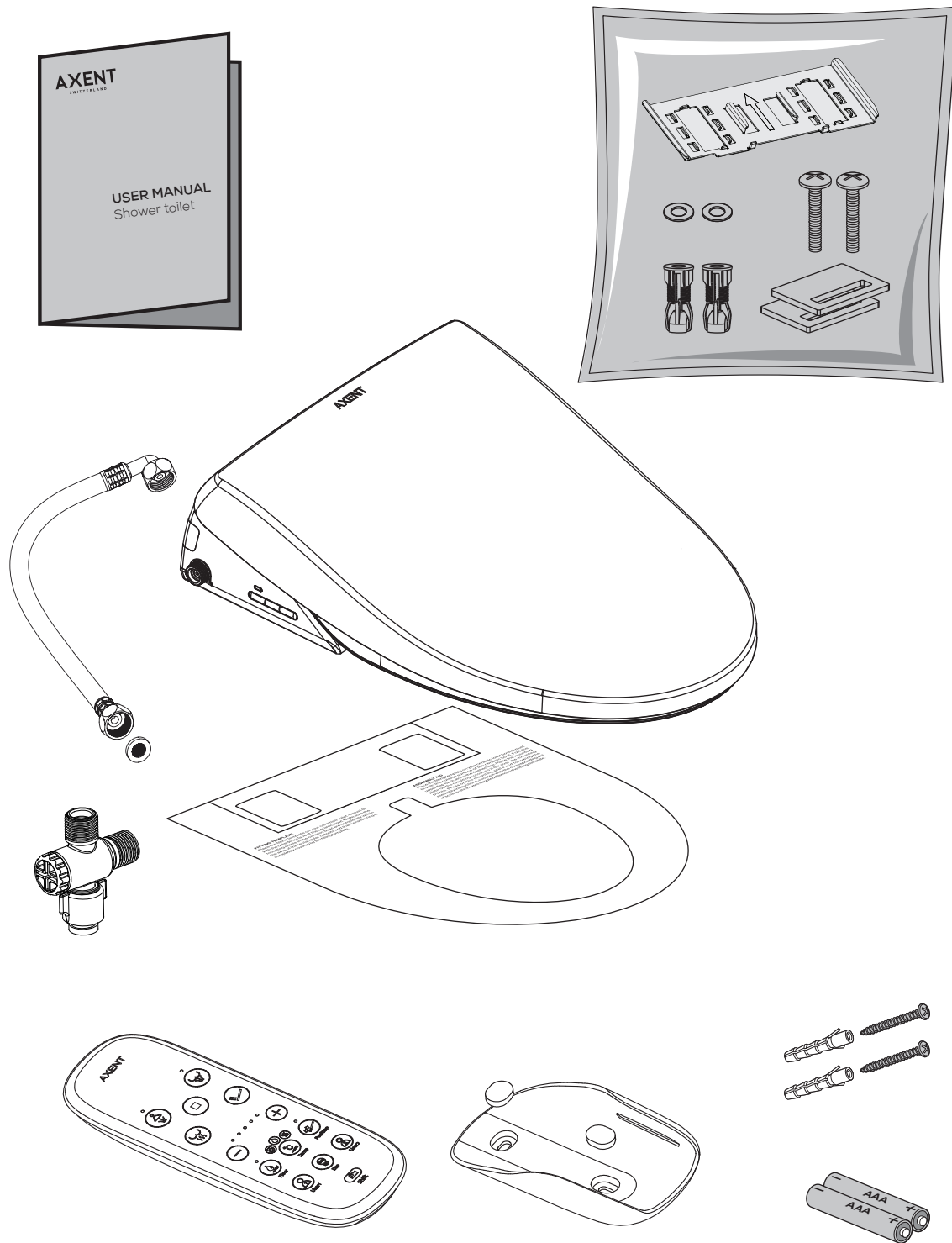
#### **CAUTION!**

##### **Avoid damage to the product as a result of improper use.**

- The appliances have to be connected to the water mains by detachable hose-sets shall state that the new hose-sets supplied with the appliance are to be used and that old hose-sets should not be reused.

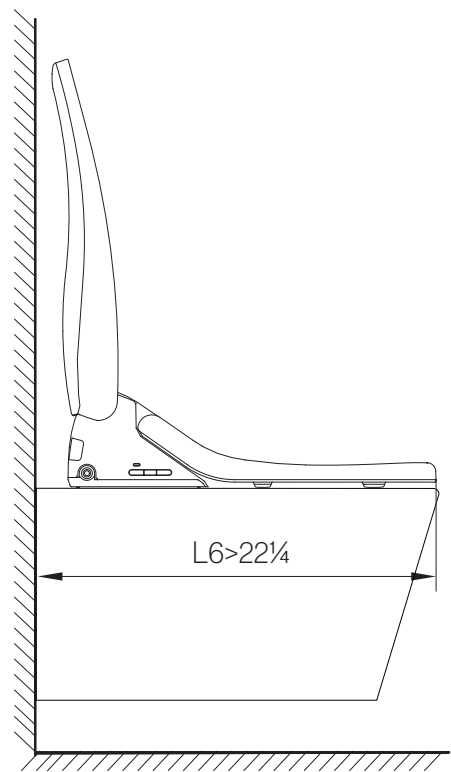
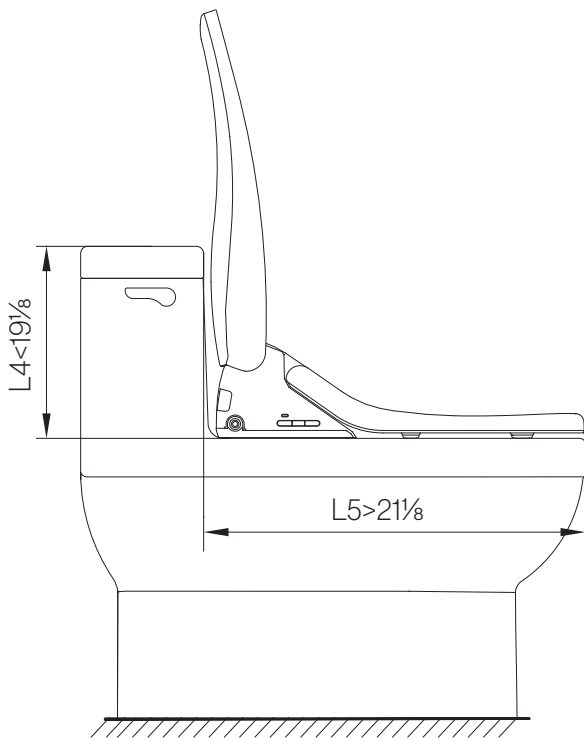
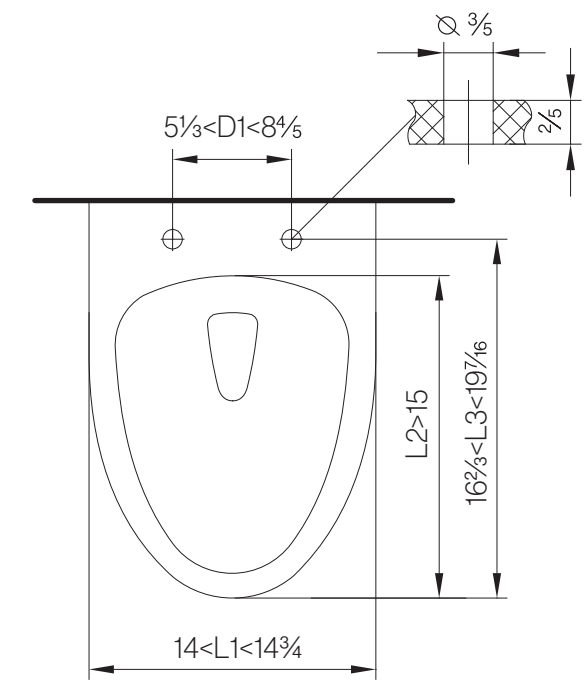
## SCOPE OF DELIVERY

---





SCOPE OF DELIVERY

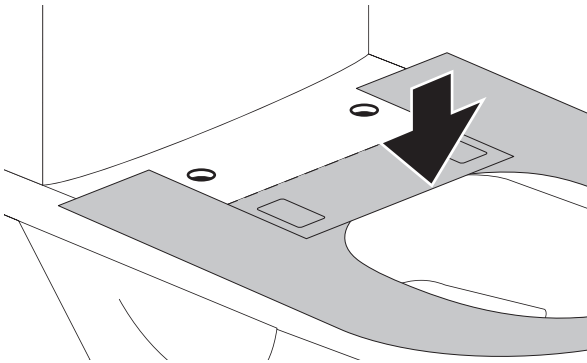


Unit: Inch

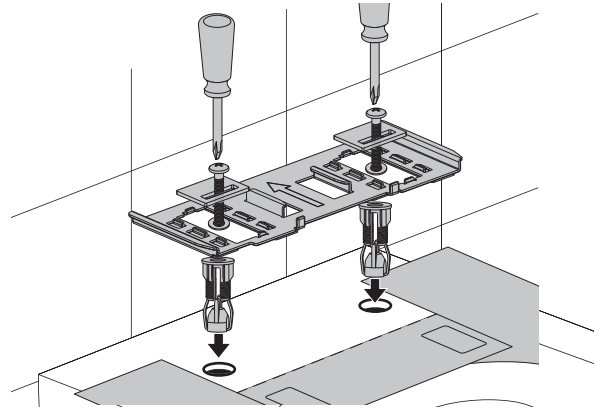


1

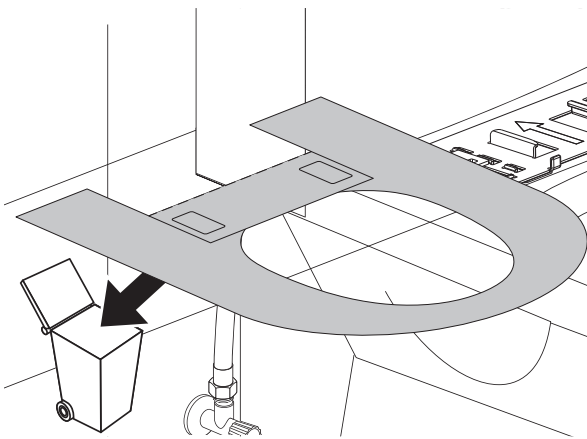
1



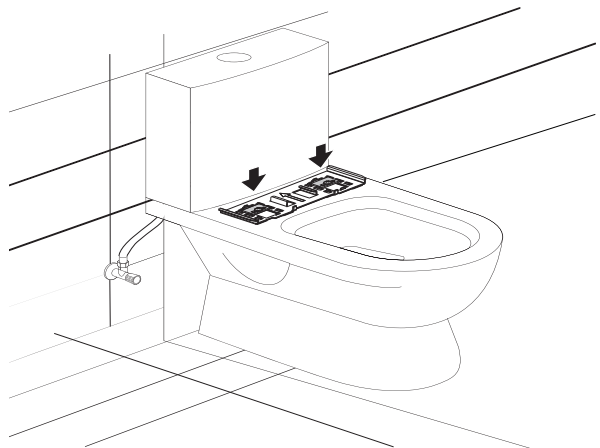
2



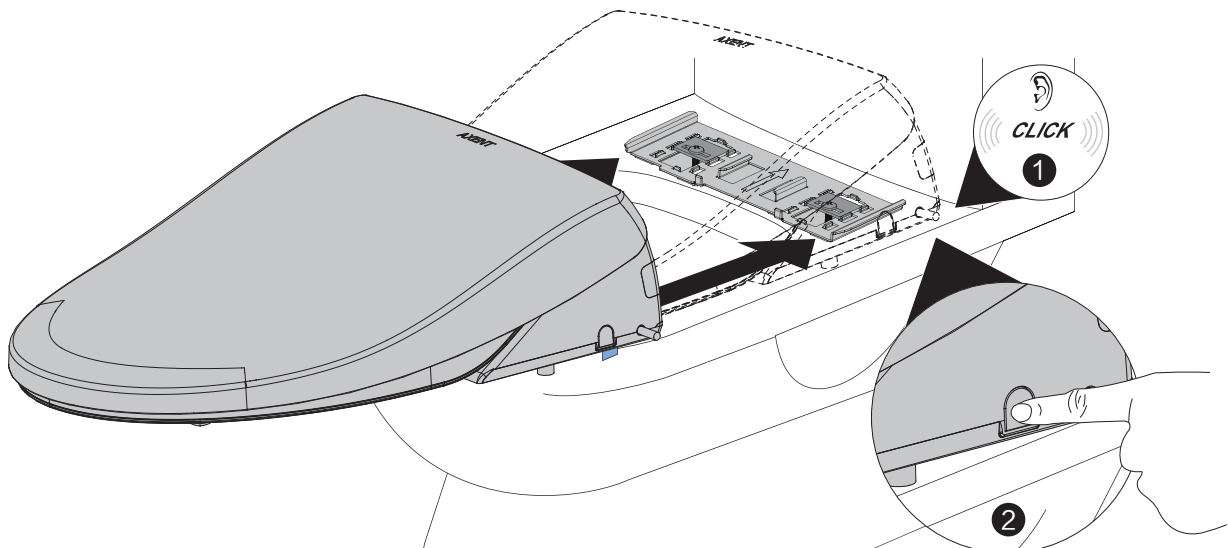
3



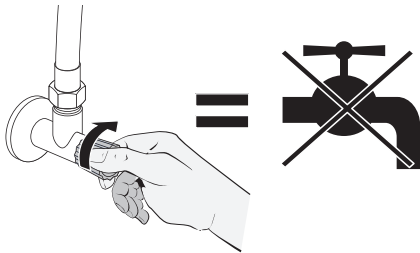
4



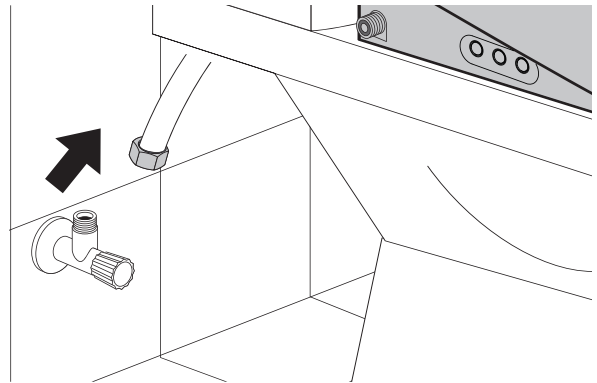
5



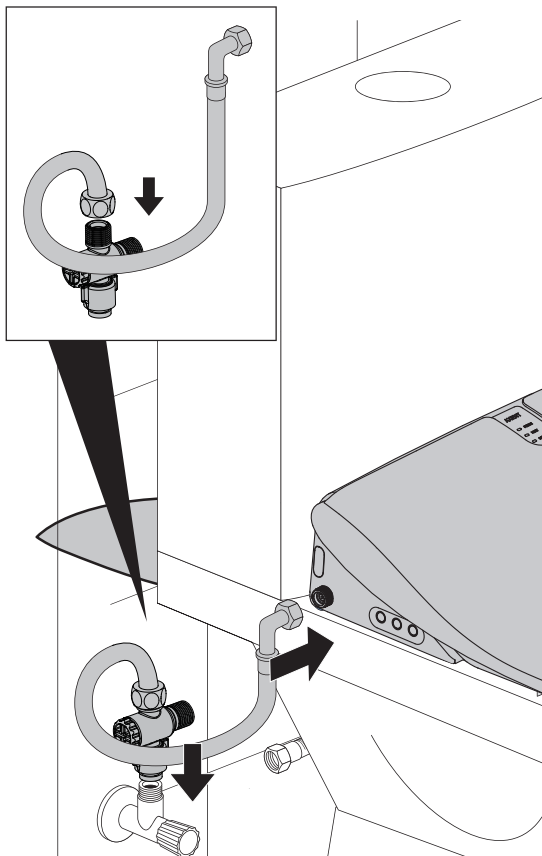
6



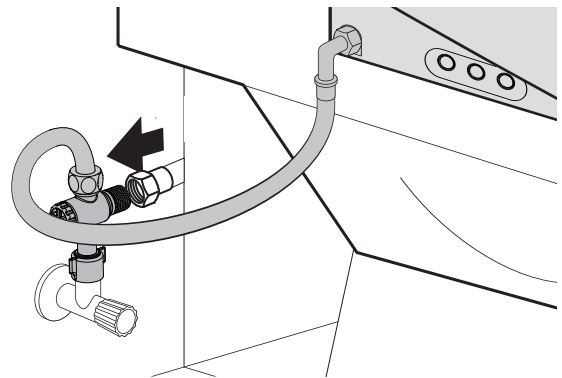
7



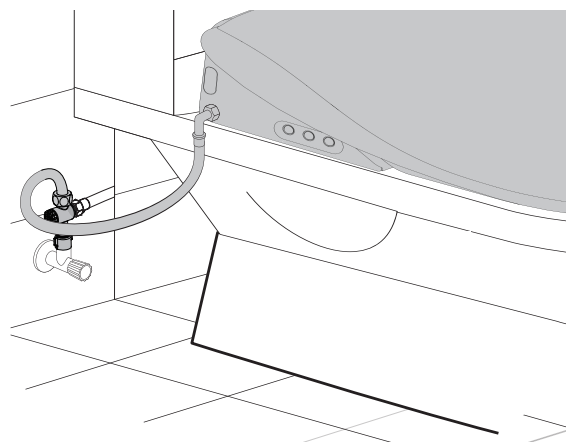
8



9

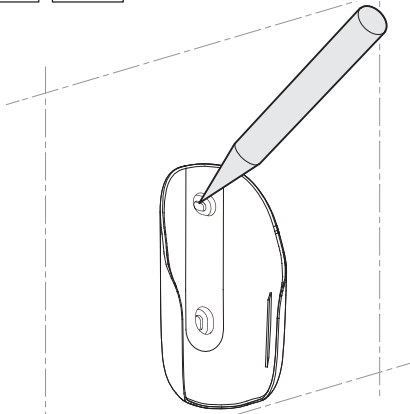
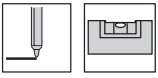


10

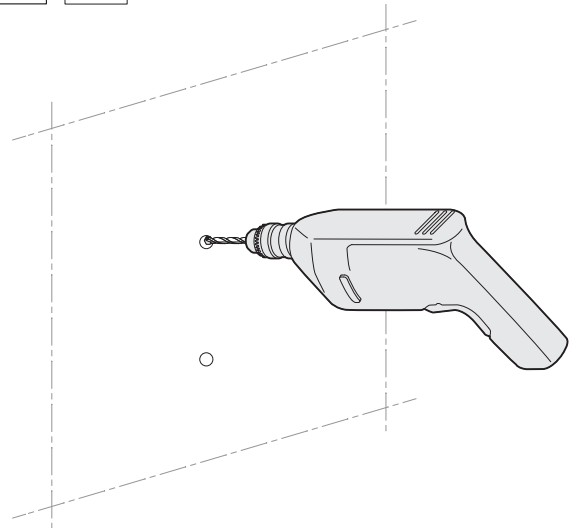
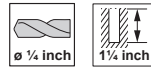


2

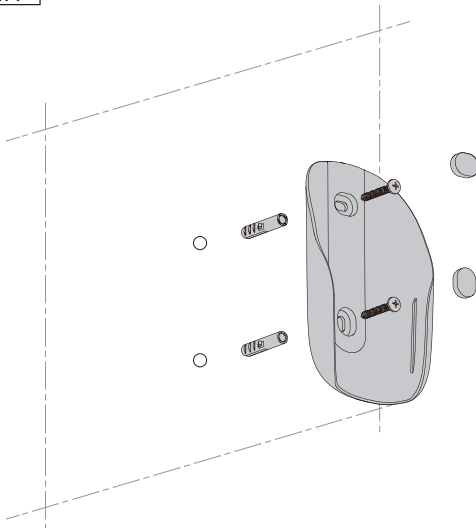
1



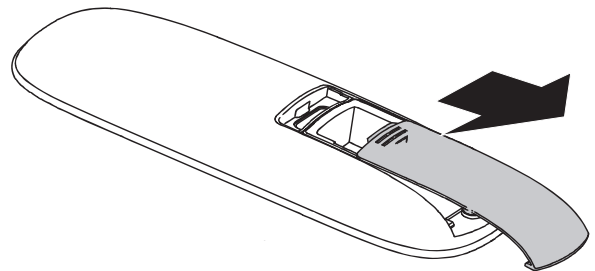
2



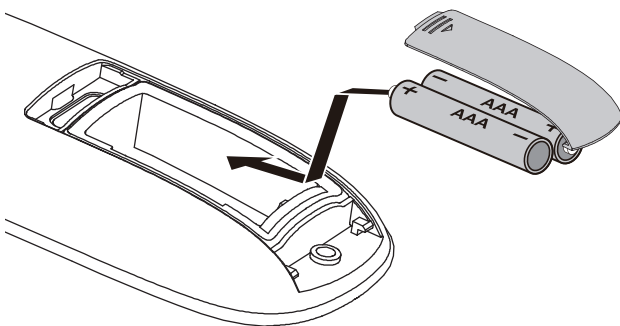
3



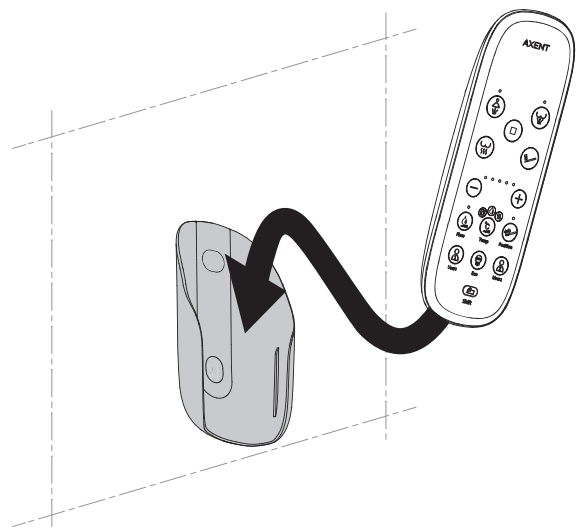
4



5

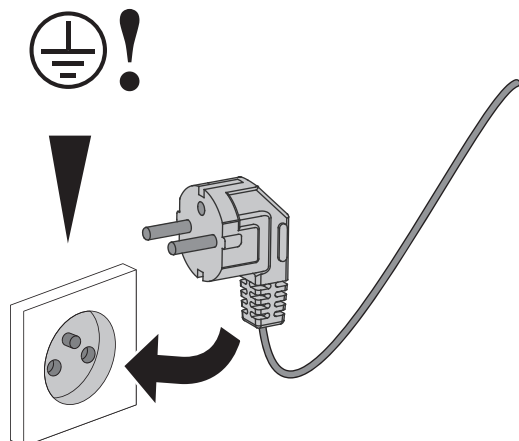


6

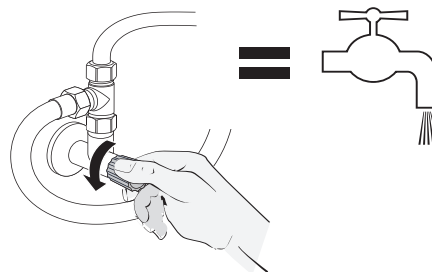




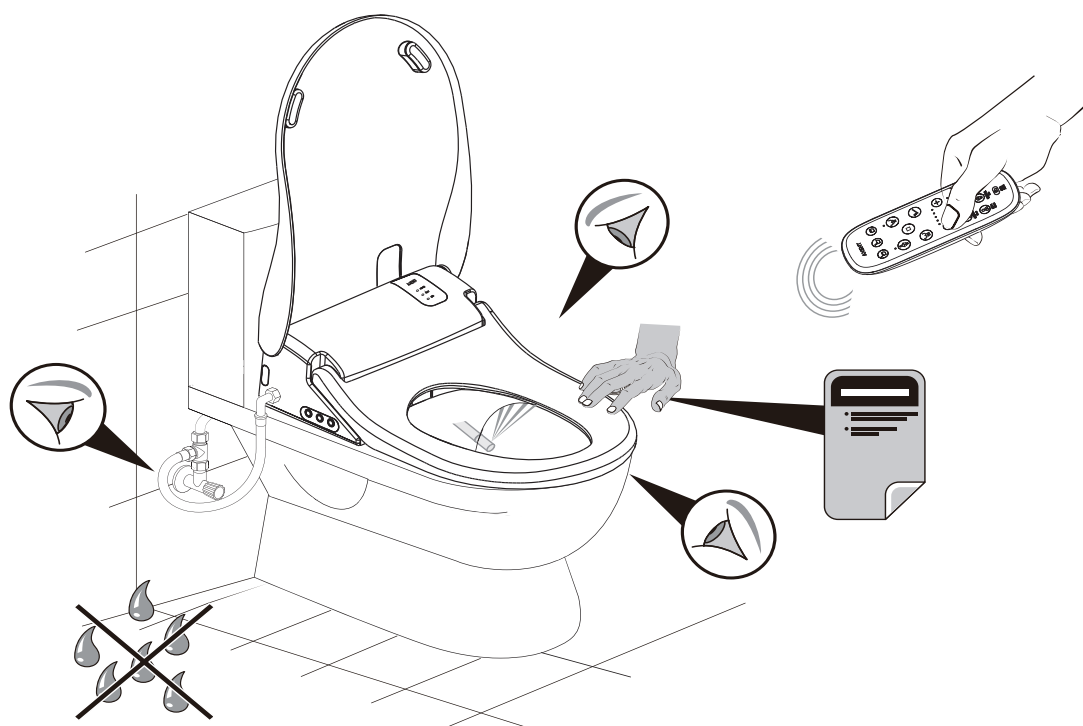
1



2



3







**AXENT Corporation Ltd.**

[info@axentbath.com](mailto:info@axentbath.com)  
[www.axentbath.com](http://www.axentbath.com)